



CAD libraries:





Buffer power supply units 13,8VDC / 27,6VDC, switch mode, in accordance with EN50131-6, GRADE 1÷3 standard for alarm systems PSBEN series

5 YEAR
WARRANTY



In accordance with EN50131-6,
GRADE 1÷3 standard for alarm
systems

**MTP Gold Medal
Securex 2014**

Features of power supplies

- EN50131-6 compliance, grades 1÷3 and II environmental class
- available models: 13,8VDC / 3A; 5A; 10A
27,6VDC / 5A
- power supply 230VAC
- fitting battery: 17Ah; 40Ah; 65Ah
- high efficiency
- low level of voltage ripple
- microprocessor-based automation system
- intelligent management of PSU power's output stage
- „SERIAL” communication port with implemented MODBUS RTU protocol
- remote monitoring (option: Ethernet, RS485)
- free program – „PowerSecurity” for monitoring PSU operation parameters
- load current control
- output voltage control
- output fuse status control
- dynamic battery test
- battery circuit continuity control
- battery voltages control
- battery fuse status control
- battery charging and maintenance control
- deep discharge battery protection (UVP)
- battery overcharge protection
- battery output protection against short circuit and reverse connection
- jumper selectable battery charging current
- remote battery test (additional module required)
- START button for battery activation
- STOP button for disconnecting during battery-assisted operation
- optical indication of PSU overload OVL
- acoustic indication of failure
- electrical parameters' readings, e.g. voltage, current
- failure memory
- adjustable times indicating AC power failure
- technical inputs/outputs with galvanic isolation
- collective failure input EXT IN
- EPS technical output indicating AC power loss
- PSU technical output indicating PSU failure
- APS technical output indicating battery failure
- internal memory of PSU operating status
- protections:
 - SCP short-circuit protection
 - OLP overload protection
 - OVP over voltage protection
 - OVP over voltage protection
 - OVP over voltage protection
 - antisabotage protection: tamper anti door opening and etachment from mounting surface
- convectional cooling
- warranty: 5 year from production date

Additional features of LCD series

- failure indication
- PSU settings adjusted from panel's level
- 3 levels of access, password-protected
- operation memory of PSU
- real-time clock, battery-backed
- an extensive range of information on LCD
- simple handling of power supply in LCD version

Buffer power supply units 13,8VDC / 27,6VDC, switch mode, in accordance with EN50131-6, GRADE 1÷3 standard for alarm systems PSBEN series

BLACK POWER



LED display



graphic LCD display

LED operation indication for PSBEN

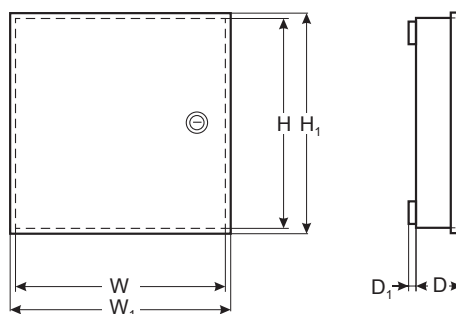
- LEDs on PSU's PCB,
- LED panel:
 - output current readings
 - output voltage readings
 - failure codes with history

LCD operation indication for PSBEN

- LEDs on PSU's PCB,
- LCD panel:
 - readings of electrical parameters
 - failure indication
 - configuration of PSU settings from control panel
 - 3 levels of password protected access
 - operation memory of PSU - 6144 values
 - failure memo - 2048 events
 - real time clock with battery backup

Code		Output voltage	Total current *	Battery charging current	Fitting battery	Dimensions W×H×D+D ₁ [+/- 2mm] W ₁ ×H ₁ [+/- 2mm]
LED panel	LCD panel					
PSBEN3012C	—	13,8VDC	3,2A	0,2A / 0,6A / 1,0A / 1,5A	17Ah	300×300×92+8 305×305
PSBEN5012C	—		5,6A	0,6A / 1,5A / 2,2A / 3,0A	17Ah	330×350×102+8 335×355
PSBEN5012D	PSBEN5012D/LCD		5,6A	0,6A / 1,5A / 2,2A / 3,0A	40Ah	330×350×173+8 335×355
PSBEN10A12E	PSBEN10A12E/LCD		10,6A	0,6A / 1,5A / 2,2A / 3,0A	65Ah	400×370×173+8 405×375
PSBEN5024C	PSBEN5024C/LCD	27,6VDC	5,6A	0,6A / 1,5A / 2,2A / 3,0A	2×17Ah	400×350×92+8 405×355


* accurate current efficiencies taking into account battery charging currents for individual degrees of protection can be found in data sheets




Accessories for power supply units PSBEN series Interfaces

BLACK POWER


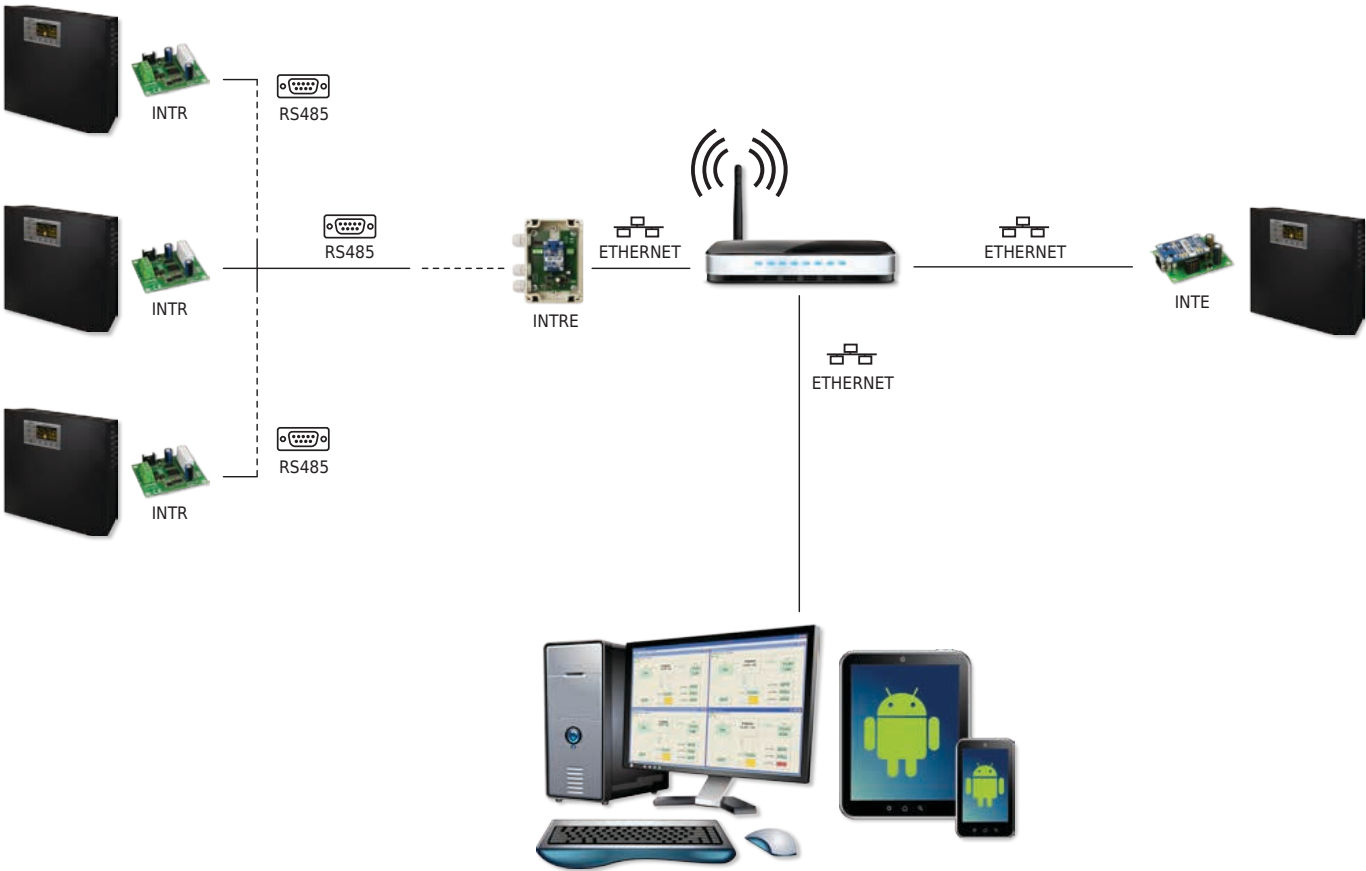
INTR
Interface RS485-TTL



INTE
Interface ETHERNET



INTRE
Interface RS485-ETHERNET

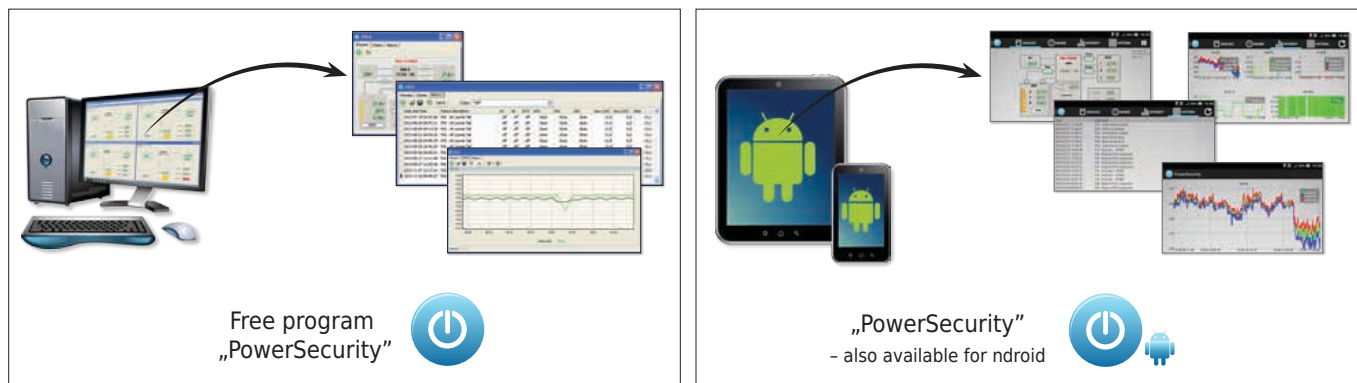
Free program „PowerSecurity”



„PowerSecurity”
- also available for Android

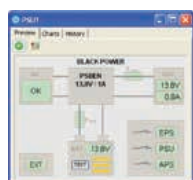
„PowerSecurity” software for power supply units of PSBEN series

PowerSecurity

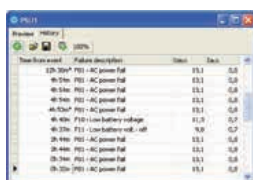


For power supply units with LED display

Remote desktop window of PSU

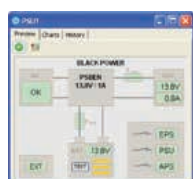


Event log

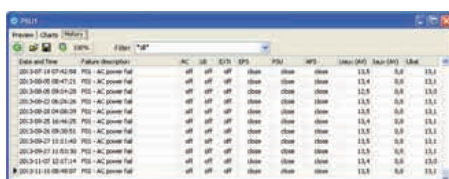


For power supply units with LCD display

Remote desktop window of PSU



Event log



History of parameters



PowerSecurity is a program allowing a remote monitoring of power supply units of PSBEN series equipped with a communication interface. Application allows to configure connections, analyze current parameters and to manage groups of power supply units.

Power supply units of PSBEN series

For power supply units of PSBEN series, remote desktop window allows monitoring following parameters:

- voltage and current at AUX output of power supply units
- 230V mains supply status
- voltage and battery charging level (optional remote battery test)
- status of technical outputs (EPS, PSU, APS)
- status of input of collective failure - EXTi

Additionally, it is possible to read history of events and in case of power supply units fitted with LCD display to read, history of parameters.

Buffer power supply units 13,8VDC / 27,6VDC, linear, in accordance with EN50131-6, GRADE 1÷2 standard for alarm systems AWZ plus series

GREY POWER plus

- power supply: 230VAC
- linear type
- microprocessor-based operating control
- in accordance with EN50131-6, GRADE 1÷2 standard for alarm systems and II environmental class
- technical outputs OC type:
 - EPS – 230V power failure AC
 - PSU – power supply failure
 - APS – battery failure indication
- deep discharge battery protection (UVP)
- protections:
 - SCP short circuit protection
 - OLP overload protection
 - OHP overheat protection
 - surge protection
 - antisabotage protection
 - OVP overvoltage protection
- warranty: 5 years from production date

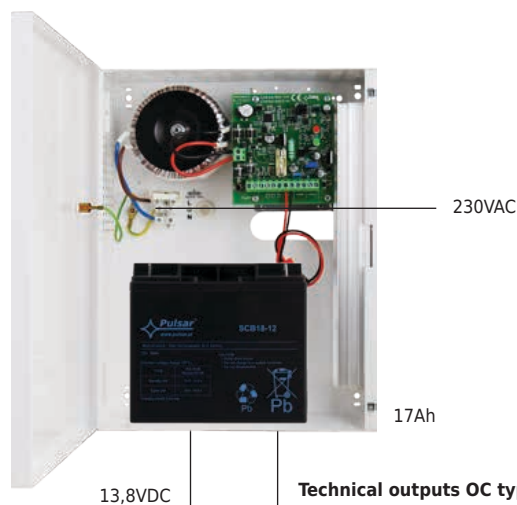


Sample product:
AWZ333

In accordance with EN50131-6, GRADE 1÷2 standard for alarm systems

Code	Output voltage	Total current	Battery charging current	Fitting battery	Dimensions W×H×D+D ₁ [+/- 2mm] W ₁ ×H ₁ [+/- 2mm]
AWZ222	13,8VDC	2,0A	0,4A / 0,9A	17Ah	230×300×82+8 235×305
AWZ333		3,0A	0,4A / 0,9A	17Ah	
AWZ224	27,6VDC	2,0A	0,4A	2×7Ah	

Sample product: AWZ333



Technical outputs OC type:
EPS – 230V power failure AC
PSU – power supply failure
APS – battery failure

Accessories:



MPSBS
technical relay outputs



e.g. alarm control panel

Receiver

Receiver e.g.



Camera



Detector



Indicator



Electromagnetic lock



Electric strike



Intercom



Video intercom

Enclosures for alarm control panels construction compliant with EN50131, GRADE 3 version fitted with transformer of TRP / TRZ / EI series *

SATEL

Dedicated for control panels SATEL.



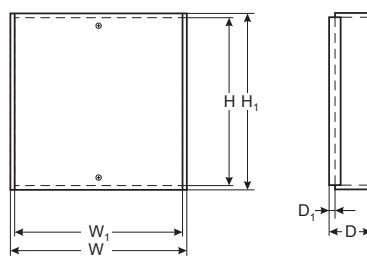
Code	Transformer	Power supply output	Fitting battery	External dimensions of enclosure: W×H×D (D ₁) [± 2mm]	External dimensions of front panel: W ₁ ×H ₁ [± 2mm]
AWO004	TRZ 20VA	16V/1,2A or 18V/1,0A	7Ah/12V	290×280×105 (15)	285×285
AWO213	TRZ 40VA	16V/2,2A or 18V/2,0A	17Ah/12V	330×305×110 (15)	325×310
AWO257	TRZ 50VA	16V/3,0A or 18V/2,8A or 20V/2,5A	17Ah/12V	340×400×110 (15)	335×405
AWO270	EIZ 75VA	20V/3,75A	17Ah/12V		
AWO306	TRP 80VA	16V/5,0A or 18V/4,5A or 20V/4,0A	28Ah/12V	460×550×175 (20)	455×555

PARADOX

Dedicated for control panels PARADOX.



Code	Transformer	Power supply output	Fitting battery	External dimensions of enclosure: W×H×D (D ₁) [± 2mm]	External dimensions of front panel: W ₁ ×H ₁ [± 2mm]
AWO268	TRP 40VA	16V/2,2A or 18V/2,0A	17Ah/12V	340×400×130 (15)	335×405
AWO278	TRP 80VA	16V/5,0A or 18V/4,5A or 20V/4,0A	17Ah/12V		



* depending on model

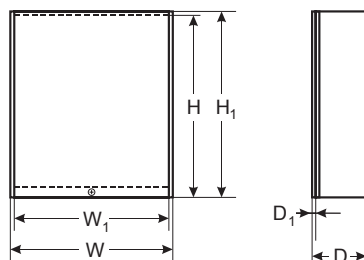
Empty enclosure for alarm control panels SATEL - GRADE 3 version without transformer

Dedicated for control panels SATEL.

Security metal enclosure for alarm control panels is designed for mounting motherboard of alarm control panel and input/output expansion modules, security modules, relays, etc. Enclosure in empty version is without transformer - this enclosure has pre-embossed openings for transformer of TRP, TRZ and EI series.

Enclosure compliant with EN50131 (GRADE 3) is used in alarm systems in accordance with EN50131.

**Compliant with EN50131
GRADE 3**



Accessories:



AWO269S

Code	Fitting battery	External dimensions of enclosure: W×H×D (D ₁) [± 2mm]	External dimensions of front panel: W ₁ ×H ₁ [± 2mm]
AWO269PU	17Ah/12V	325×400×100 (15)	323×405

Enclosures for expanders GRADE 3 version construction compliant with EN50131

Universal

Dedicated for control panels DSC, SATEL, PARADOX, RISCO...

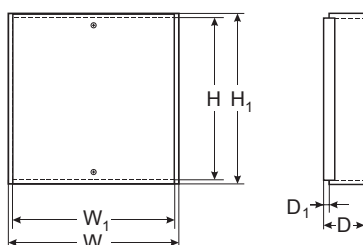
Code	Destination	External dimensions of enclosure: W×H×D (D ₁) [± 2mm]	External dimensions of front panel: W ₁ ×H ₁ [± 2mm]
AWO454	DSC, SATEL, PARADOX, RISCO	297×203×67 (16)	292×207

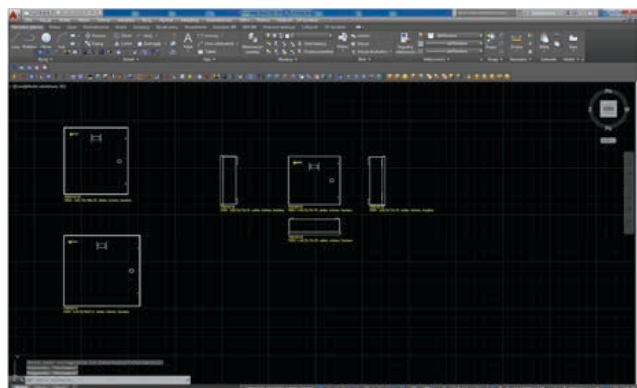
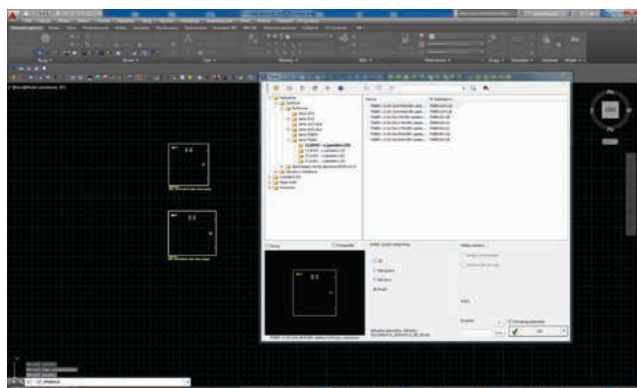


SATEL

Dedicated for control panels SATEL.

Code	Destination	Fitting battery	External dimensions of enclosure: W×H×D (D ₁) [± 2mm]	External dimensions of front panel: W ₁ ×H ₁ [± 2mm]
AWO229	SATEL	17Ah/12V	330×305×120 (15)	325×310





CAD libraries

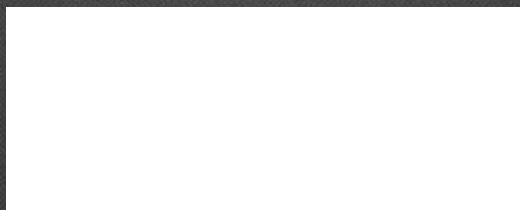
Our product libraries are present in CADprofi – a software supporting architecture design and design of mechanical, plumbing, and electrical installations.

For more information visit www.cadprofi.com.



In addition, free PulsarCAD software, a library of current Pulsar products, can be found at our website: www.pulsar.pl free.





Contact us



Pulsar sp. j.
Siedlec 150
32-744 Lapczyca, Poland



sales@pulsar.pl



+48 14 610 19 45



www.pulsar.pl