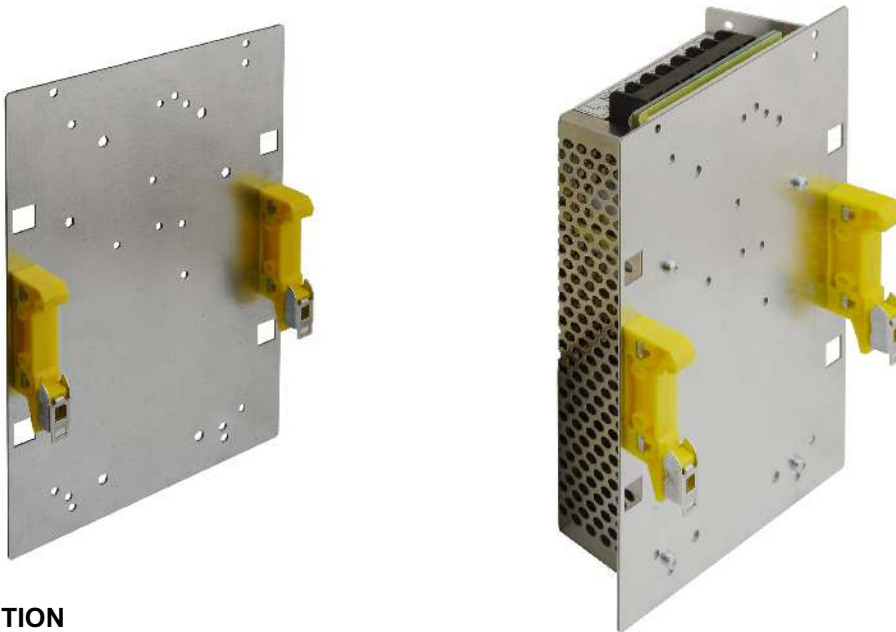


CODE: **PSDIN2** v1.3/XII
NAME: **Holder DIN/PS/PSB2**



DESCRIPTION

The PSDIN2 holder is designed as an accessory for the following power supply units: PS-1001270, PS-15012100, PS-20012140, PS-1002435, PS-1502450, PS-2002470, PSB-1001270, PSB-15512110, PSB-1002435, PSB-1552455, PSB-752425, PSB-30012200, PSB-1554828, PSB-3004850, PSB-30024100, PSBOC1554828, PSBOC30024100, PSBOC3004850, PSBOC1001270, PSBOC15512110, PSBOC1002435, PSBOC1552455, PSBOC752425, PSBOC30012200, RS-75xxx, RS-100xxx, RS-150xxx, LRS-75xxx, LRS-100xxx, LRS-150xxx. The PSDIN2 allows the mounting of the abovementioned power supplies onto the DIN rail. Included with the holder is a set of screws (5xM3x4 and 4xM4x5) for mounting of the power supply to the holder.

TECHNICAL DATA

Dimensions:	142 x 22 x 200 (W x L x H) [mm] (+/- 1)
Operating conditions:	class II environment, -10°C+40°C
Mounting elements:	2x DIN rail holders, 5x M3 x 4 or 4xM4x5
Remarks:	made with metal
Gwarancja:	2 year from the production date