

Buffer power supply units

compliant with EN 50131-6
are intended to alarm
system devices



5 YEAR
WARRANTY

CAD libraries:



Pulsar CAD



**MTP Gold Medal
Securex 2014**



Buffer power supply units 13,8VDC / 27,6VDC, switch mode, in accordance with EN50131-6, GRADE 1÷3 standard for alarm systems PSBEN series

5 YEAR
WARRANTY



In accordance with EN50131-6,
GRADE 1÷3 standard for alarm
systems

**MTP Gold Medal
Securex 2014**

Features of power supplies

- EN50131-6 compliance, grades 1÷3 and II environmental class
- available models: 13,8VDC / 3A; 5A; 10A 27,6VDC / 5A
- power supply 230VAC
- fitting battery: 17Ah; 40Ah; 65Ah
- high efficiency
- low level of voltage ripple
- microprocessor-based automation system
- intelligent management of PSU power's output stage
- „SERIAL” communication port with implemented MODBUS RTU protocol
- remote monitoring (option: Ethernet, RS485)
- free program – „PowerSecurity” for monitoring PSU operation parameters
- load current control
- output voltage control
- output fuse status control
- dynamic battery test
- battery circuit continuity control
- battery voltages control
- battery fuse status control
- battery charging and maintenance control
- deep discharge battery protection (UVP)
- battery overcharge protection
- battery output protection against short circuit and reverse connection
- jumper selectable battery charging current
- remote battery test (additional module required)
- START button for battery activation
- STOP button for disconnecting during battery-assisted operation
- optical indication of PSU overload OVL
- acoustic indication of failure
- electrical parameters' readings, e.g. voltage, current
- failure memory
- adjustable times indicating AC power failure
- technical inputs/outputs with galvanic isolation
- collective failure input EXT IN
- EPS technical output indicating AC power loss
- PSU technical output indicating PSU failure
- APS technical output indicating battery failure
- internal memory of PSU operating status
- protections:
 - SCP short-circuit protection
 - OLP overload protection
 - OVP over voltage protection
 - OVP over voltage protection
 - OVP over voltage protection
 - antisabotage protection: tamper anti door opening and etachment from mounting surface
- convectional cooling
- warranty: 5 year from production date

Additional features of LCD series

- failure indication
- PSU settings adjusted from panel's level
- 3 levels of access, password-protected
- operation memory of PSU
- real-time clock, battery-backed
- an extensive range of information on LCD
- simple handling of power supply in LCD version

Buffer power supply units 13,8VDC / 27,6VDC, switch mode, in accordance with EN50131-6, GRADE 1÷3 standard for alarm systems PSBEN series

BLACK POWER



LED display



graphic LCD display

LED operation indication for PSBEN

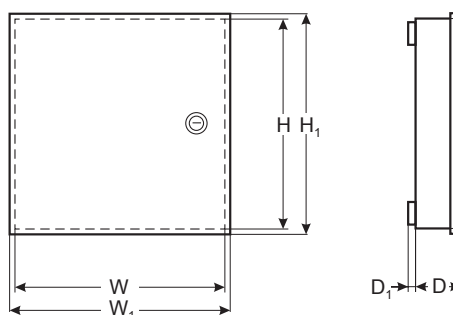
- LEDs on PSU's PCB,
- LED panel:
 - output current readings
 - output voltage readings
 - failure codes with history

LCD operation indication for PSBEN

- LEDs on PSU's PCB,
- LCD panel:
 - readings of electrical parameters
 - failure indication
 - configuration of PSU settings from control panel
 - 3 levels of password protected access
 - operation memory of PSU - 6144 values
 - failure memo - 2048 events
 - real time clock with battery backup

Code		Output voltage	Total current *	Battery charging current	Fitting battery	Dimensions W×H×D+D ₁ [+/- 2mm] W ₁ ×H ₁ [+/- 2mm]
LED panel	LCD panel					
PSBEN3012C	—	13,8VDC	3,2A	0,2A / 0,6A / 1,0A / 1,5A	17Ah	300×300×92+8 305×305
PSBEN5012C	—		5,6A	0,6A / 1,5A / 2,2A / 3,0A	17Ah	330×350×102+8 335×355
PSBEN5012D	PSBEN5012D/LCD		5,6A	0,6A / 1,5A / 2,2A / 3,0A	40Ah	330×350×173+8 335×355
PSBEN10A12E	PSBEN10A12E/LCD		10,6A	0,6A / 1,5A / 2,2A / 3,0A	65Ah	400×370×173+8 405×375
PSBEN5024C	PSBEN5024C/LCD	27,6VDC	5,6A	0,6A / 1,5A / 2,2A / 3,0A	2×17Ah	400×350×92+8 405×355

* accurate current efficiencies taking into account battery charging currents for individual degrees of protection can be found in data sheets



Accessories for power supply units PSBEN series Interfaces

BLACK POWER

INTR
Interface RS485-TTL




Diagram showing the INTR interface board with SERIAL TTL and RS485 connectors.

INTE
Interface ETHERNET




Diagram showing the INTE interface board with SERIAL TTL and ETHERNET connectors.

INTRE
Interface RS485-ETHERNET


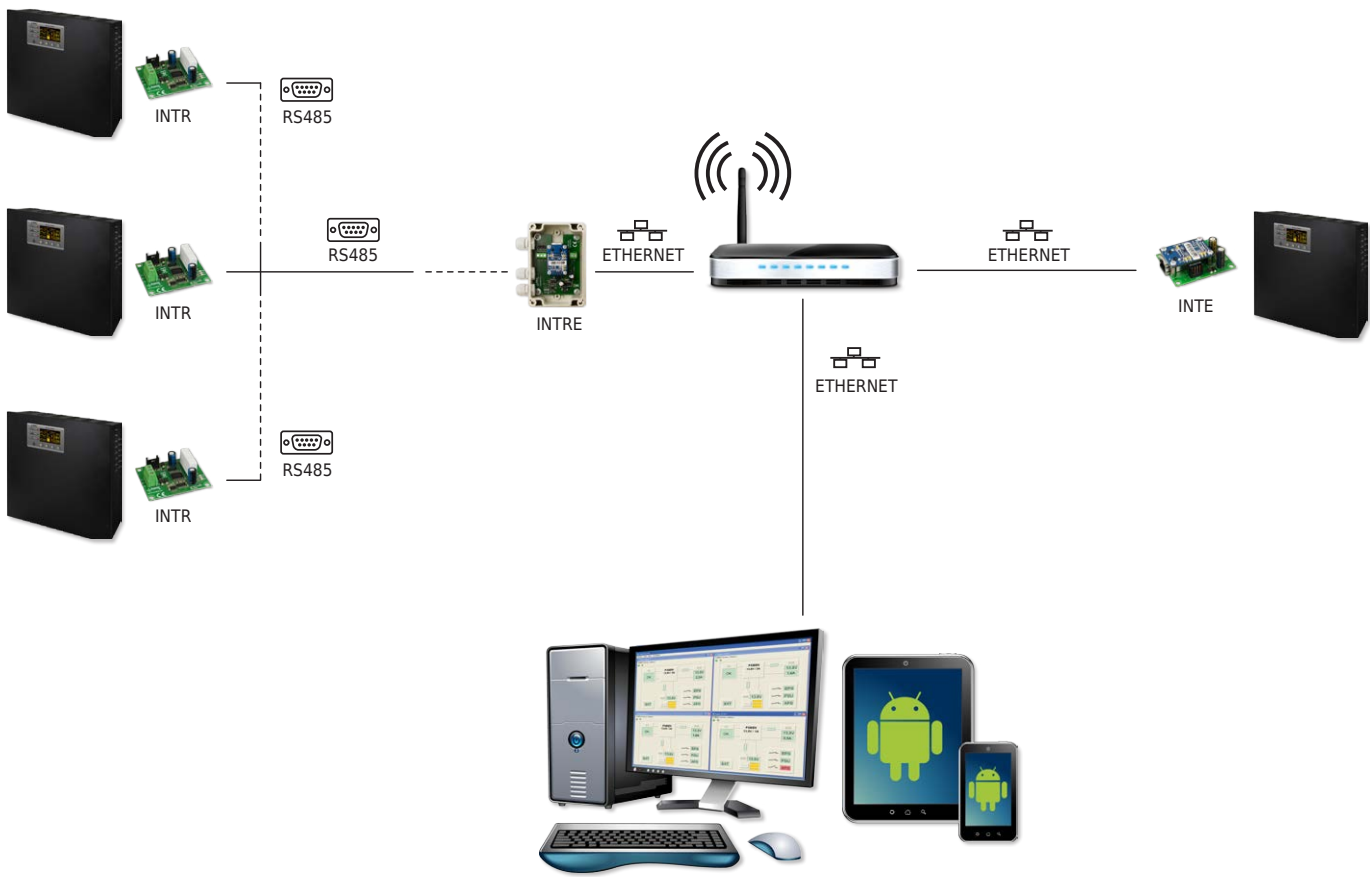


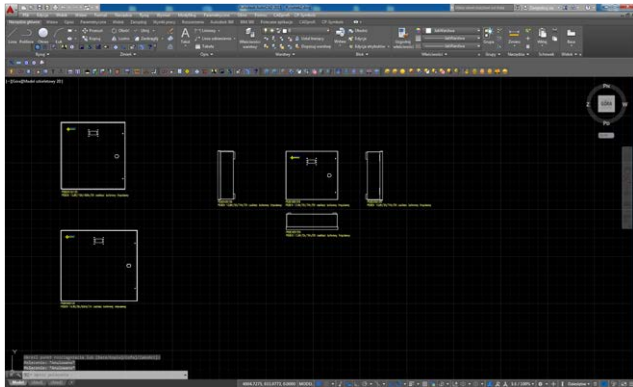
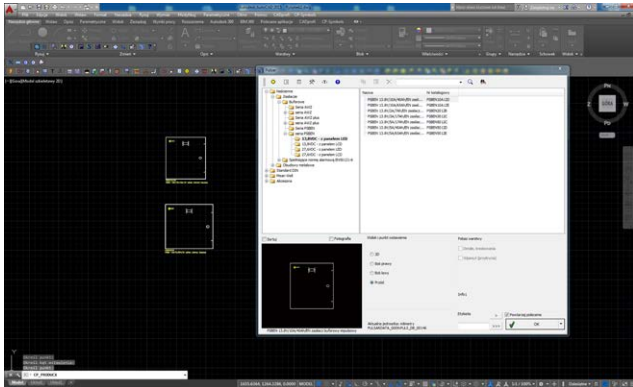
Diagram showing the INTRE interface board with RS485 and ETHERNET connectors.



Free program
„PowerSecurity”



„PowerSecurity”
- also available for Android



CAD libraries

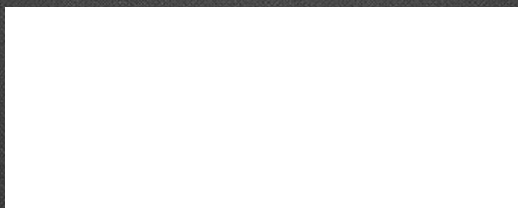
Our product libraries are present in CADprofi – a software supporting architecture design and design of mechanical, plumbing, and electrical installations.

For more information visit www.cadprofi.com.



In addition, free PulsarCAD software, a library of current Pulsar products, can be found at our website: www.pulsar.pl free.





Contact us



Pulsar sp. j.
Siedlec 150
32-744 Lapczyca, Poland



sales@pulsar.pl



+48 14 610 19 45



www.pulsar.pl