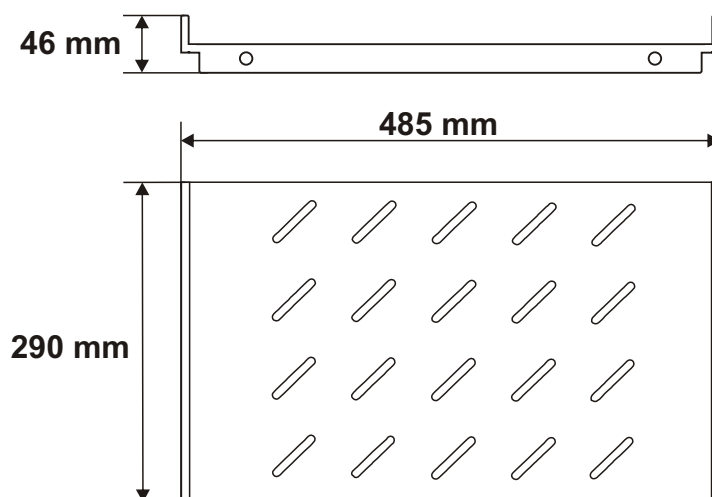
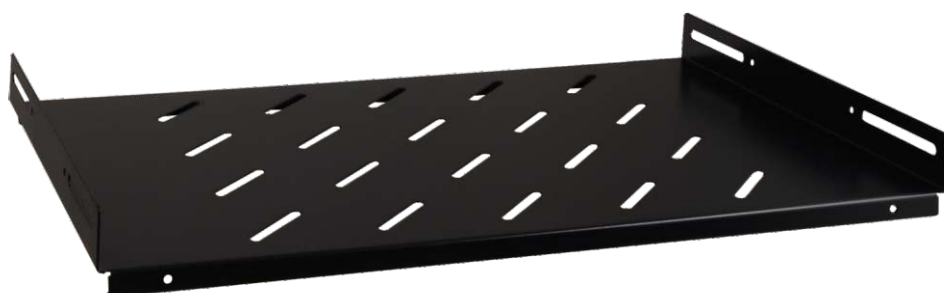


CODE: **RAPS450W** v1.0/I
NAME: **Fixed shelf 485x290 for RACK cabinet, type RW**

EN



INTENDED USE

The fixed shelf is intended for a 450mm deep RACK cabinet, type: RW. Due to the shelf, the RACK cabinet can accommodate devices that are not housed in a RACK 19" enclosure.

SPECIFICATIONS

External dimensions:	W=485, H=46, D=290 [mm, +/-2]
Dimensions of the shelf:	W=485, D=290 [mm, +/-2]
Net/gross weight:	1,6 / 1,7 [kg]
Materials:	1,2 mm steel sheet, RAL 9004
Static load:	60 kg
Use:	inside
Notes:	<ul style="list-style-type: none"> - four-point fixing to the side RACK rails - mounting set includes: 4 M6 screws, cage nuts, plastic washers