

Universal power supply systems **SWS / SWB**

with and without buffer battery backup
for PoE switches



Use **CONFISWITCH**

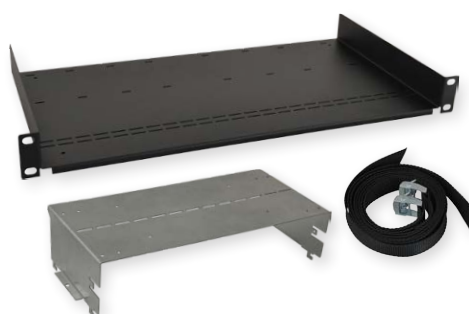
configurator of power supply systems for PoE switches



PoE switches without power supply



Accessories



Power supply systems for PoE switches without battery backup

SWS series

Enclosure with power supply unit and additional adapter for mounting switch and recorder *

Features:

- power supply: 200-240VAC
- output voltage - PoE: 52VDC - JACK plug 2,1/5,5
- available models: 60W / 150W *
- dedicated to 4/8 port PoE switches
- metal enclosure - color white RAL9003
- protections:
 - SCP short circuit protection
 - OLP overload protection
 - OVP overvoltage protection
 - OHP overheat protection *
 - surge protection
 - antisabotage protection
- warranty: 2 years from production date

* depending on model



Tamper indicating enclosure opening - 1 piece



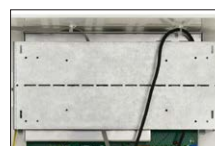
Closing - front mounting - 2 pieces



Distance from wall (plastic) - 8mm



Switch power supply JACK 2,1/5,5 plug



Mounting plate PoE switches

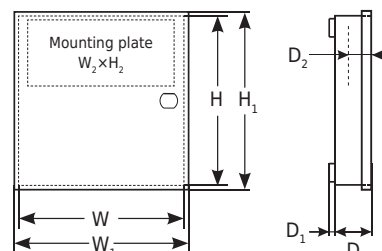
Code	Output voltage - PoE / power	Adjustable output voltage - PoE	Enclosure dimensions W×H×D+D ₁ [± 2mm]	Mounting plate dimensions W ₂ ×H ₂ ×D ₂ [± 2mm]
SWS-60	52VDC / 60W	48÷53VDC	230×300×82+8	200×110×50
SWS-150	52VDC / 150W	48÷53VDC	300×300×105+8	230×110×45

Accessories:



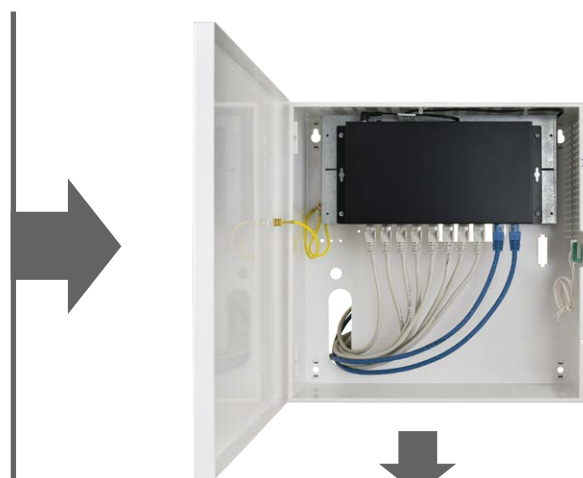
DC/DC50HV
converter

(e.g. recorder power supply 12VDC)



Sample product: SWS-150

Switches:
S64WP / S108WP
SG64WP / SG108WP
SFG64WP / SFG64F1WP
SF108



Recorder



Controller IP
(IP telephone, IP access control, ...)

IP receivers
Data + power supply 52VDC



IP camera



IP telephone



IP intercom



IP video intercom



IP access control



Access Point IP

Power supply systems for PoE switches buffer SWB series

Enclosure with buffer power supply unit and additional adapter for mounting switch and recorder *

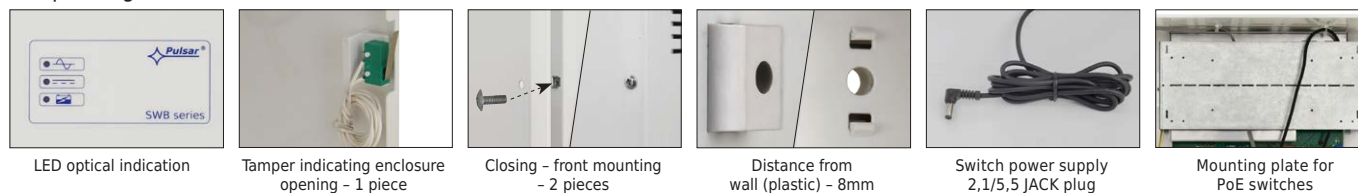
Features:

- power supply: 200-240VAC
- output voltage – PoE: 52VDC / 54VDC * – JACK plug 2,1/5,5
- available models: 60W / 120W / 300W * – buffer
- possibility of installing additional mounting plate *
- optical indication
- fitting battery: 1x7Ah / 2x17Ah / 4x17Ah *
- battery charging current: 0,5A / 1A / 2A jumper selectable *
- deep discharge battery protection – UVP
- battery charging and maintenance control
- metal enclosure – color white RAL9003
- protections:
 - SCP short circuit protection,
 - OLP overload protection
 - OVP overvoltage protection,
 - OHP overheat protection *
 - surge protection,
 - antisabotage protection
- warranty: 2 years from production date



Sample product:
SWB-300

* depending on model



Code	Output voltage - PoE / power	Battery charging current	Space for battery	Enclosure dimensions W×H×D+D ₁ [+/- 2mm] ¹	Mounting plate dimensions W ₂ ×H ₂ ×D ₂ [+/- 2mm]	Additional mounting plate
SWB-60	52VDC / 60W – buffer	1A / 2A	1 × 7Ah	300×300×105+8	230×110×45	—
SWB-120	52VDC / 120W – buffer	0,5A / 2A	2 × 17Ah	330×380×173+8	245×150×90	BM2
SWB-300	54VDC / 300W – buffer	0,5A / 1A / 2A	4 × 17Ah	460×390×173+8	245×150×90	

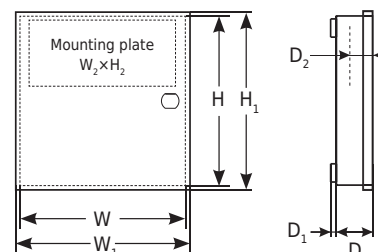
Accessories:



BM2
mounting plate
(installation of additional components)



DC/DC50HV
converter
(e.g. recorder power supply 12VDC)



Sample product: SWB-300

Switches:
S64WP / S108WP
SG64WP / SG108WP
SFG64WP / SFG64F1WP
SF108



Battery 4x7÷17Ah



BM2 – mounting plate



DC/DC50HV converter – 12V/5A



IP receivers
Data + power supply 52VDC



Recorder



NVR Client



Controller IP
(IP telephone, IP access control, ...)

Power supply systems for PoE switches buffer SWB...RACK series

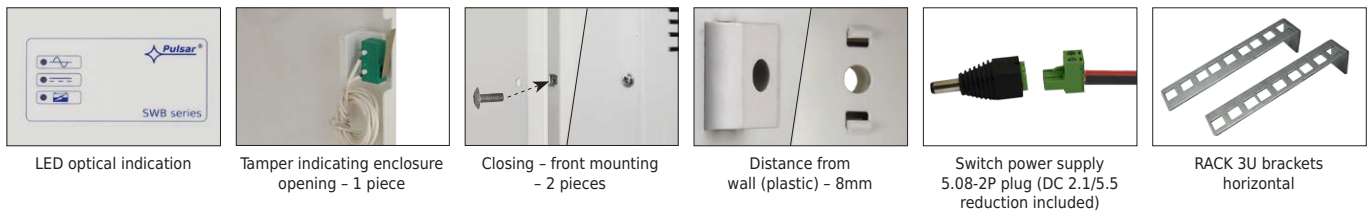
Enclosure with buffer power supply unit and mounting bracket for RACK 19" standard devices

Features:

- power supply: 200-240VAC
- output voltage - PoE: 54VDC - EDG 5.08MM-2P plug (JACK plug 2,1/5,5 - included)
- available models: 300W - buffer
- RACK - 3U brackets, with adjustable mounting height on 3 levels
- enclosure construction is compliant with requirements of General Data Protection Regulation GDPR (possibility of installing two locks with different codes)
- optical indication
- fitting battery: 4x17Ah
- battery charging current: 0,5A / 1A / 2A jumper selectable
- deep discharge battery protection - UVP
- battery charging and maintenance control
- metal enclosure - color white RAL9003
- protections:
 - SCP short circuit protection, ◦ OLP overload protection
 - OVP overvoltage protection, ◦ OHP overheat protection
 - surge protection, ◦ antisabotage protection
- warranty: 2 years from production date



SWB-300RACK



LED optical indication

Tamper indicating enclosure opening - 1 piece

Closing - front mounting - 2 pieces

Distance from wall (plastic) - 8mm

Switch power supply 5.08-2P plug (DC 2.1/5.5 reduction included)

RACK 3U brackets horizontal

Code	Output voltage - PoE / power	Battery charging current	Space for battery	RACK 19" profiles / recorder space	GDPR (possibility of installing two locks with different codes)	Enclosure dimensions W×H×D+D ₁ [± 2mm]	Installation space W ₂ ×H ₂ ×D ₂ [± 2mm]
SWB-300RACK	54VDC / 300W - buffer	0,5A / 1A / 2A	4 × 17Ah	3U - horizontal / ✓	✓	535×650×165+14	530×430×155

Accessories:



RAPDS

Universal RACK adapter for desktop switches

DC/DC50HV

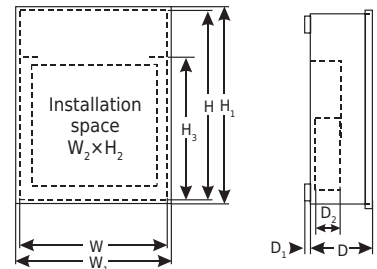
converter (e.g. recorder power supply 12VDC)

ZPR

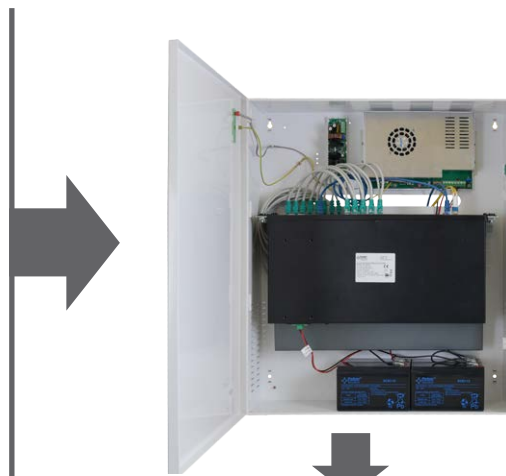
Set of two straps for mounting recorder

2x MR008

Lock, type 802 - various code



Switches:
S116WP / S124WP
SF108WP, SF116WP, SF124WP



NVR Client



Controller IP (IP telephone, IP access control, ...)

IP receivers Data + power supply 52VDC



Enclosures for CCTV recorders

Vertical

Enclosure construction is compliant with requirements of General Data Protection Regulation (GDPR), as personal data must be protected and stored securely. Enclosure protects recorder/switch against unauthorized access or theft. Enclosures are made of 1,2mm thickness steel.

Possibility of install inside:

- recorder
- switches desktop
- RACK 19" switches
- RACK 19" patch panel
- monitor (max 22") - applies to AWO531W



Code	Space for battery	230VAC socket	Locking with keys (GDPR)	Place for a monitor (max 22")	Possibility of mounting ARAW45	RACK 19" holder (horizontal)	External dimensions of enclosure: W×H×D+D ₁ [± 2mm]	Dimensions of recorder space: W ₂ ×H ₂ ×D ₂ [± 2mm]	Straps for mounting recorder
AWO531W	4×7Ah	—	✓	✓	✓	4U	589×650×261+14	480×400×180	✓
AWO532W	4×7Ah / 2×17Ah	2 pcs.	— (2×MR008 kit required)	—	—	3U	535×540×165+14	530×380×155	— (required set ZPR)

Accessories:



ARAW45
Fan with temperature sensor 45°C



ML572
Extension cord with switch and grounding 4 sockets



RAPDS
Universal RACK adapter for desktop switches



ZPR
Set of two straps for mounting recorder



MR008
Lock, type 802 - various code

PoE switches for IP cameras - without power supply for installation in universal power supply systems SWS and SWB series S...WP, SG...WP, SF...WP, SFG...WP series

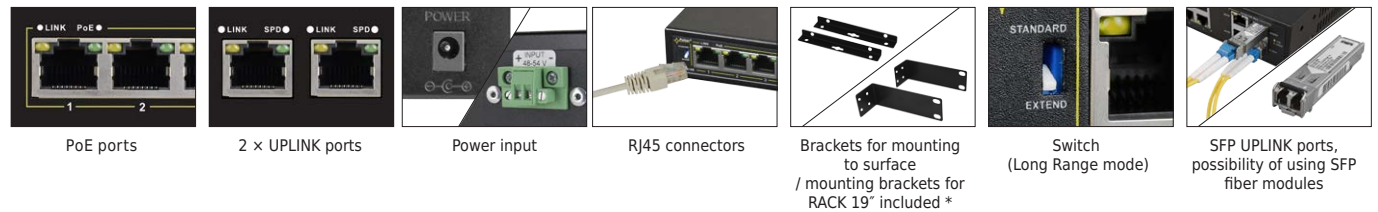
Features:

- supports devices compliant with IEEE 802.3af/at standard
- 10/100 Mb/s and 1 Gb/s ports *
- PoE ports - data transfer and power supply
- Long Range mode: STANDARD - 100m/100 Mb/s or EXTEND - 250m/10 Mb/s *
- 30W for each PoE port - 52VDC (PoE+)
- UPLINK ports: 2 ports - for recorder / switch / computer installation
- SFP UPLINK sockets: 2 ports - for recorder / switch / computer installation *
- external power supply 48-54VDC / 48-57VDC *
- additional mounting elements:
 - brackets for mounting to surface *
 - mounting brackets for RACK 19" *
- warranty: 2 years from production date



Sample product:
SF116WP

* depending on model

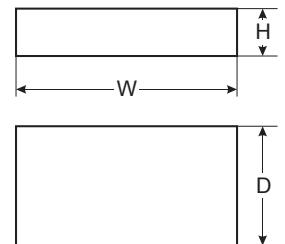


Applies to: S...WP series

Applies to: SF...WP series

Code	Number of ports: PoE	Long Range mode 100 Mb/s - up to 100m 10 Mb/s - up to 250m	UPLINK		Power supply	Brackets for mounting to surface /	Mounting brackets for RACK 19"	Dimensions W×H×D [±/± 2mm]
			RJ45 ports	SFP sockets				
S64WP	4 - 100 Mb/s	✓ (1+4 ports)	2 - 100 Mb/s	—	48-57VDC	✓ / —	—	118×28×85
SG64WP	4 - 1 Gb/s	—	2 - 1 Gb/s	—	48-57VDC	✓ / —	—	118×28×85
SFG64WP	4 - 1 Gb/s	—	—	2 - 1 Gb/s	48-57VDC	✓ / —	—	118×28×95
SFG64F1WP	4 - 1 Gb/s	—	1 - 1 Gb/s	1 - 1 Gb/s	48-57VDC	✓ / —	—	118×28×95
S108WP	8 - 100 Mb/s	✓ (1+8 ports)	2 - 100 Mb/s	—	48-57VDC	✓ / —	—	190×28×105
SG108WP	8 - 1 Gb/s	—	2 - 1 Gb/s	—	48-57VDC	✓ / —	—	190×28×105
SF108WP	8 - 100 Mb/s	—	2 - 1 Gb/s	2 - 1 Gb/s	48-57VDC	✓ / ✓	✓	220×44×150
S116WP	16 - 100 Mb/s	✓ (9+16 ports)	2 - 1 Gb/s	—	48-57VDC	— / ✓	✓	270×44×181
SF116WP	16 - 100 Mb/s	—	2 - 1 Gb/s	2 - 1 Gb/s	48-57VDC	— / ✓	✓	442×44×224
S124WP	24 - 100 Mb/s	✓ (17+24 ports)	2 - 1 Gb/s	—	48-57VDC	— / ✓	✓	330×44×204
SF124WP	24 - 100 Mb/s	—	2 - 1 Gb/s	2 - 1 Gb/s	48-57VDC	— / ✓	✓	442×44×224

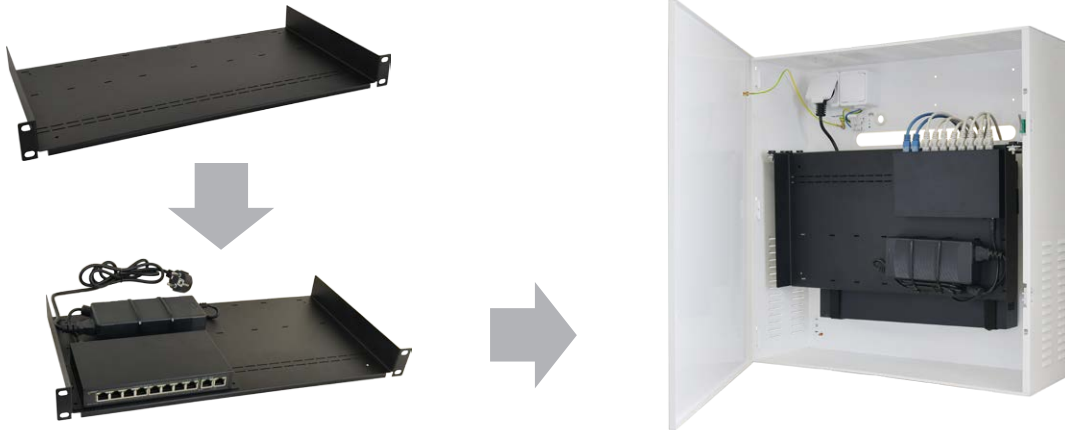
Examples of application:



Accessories

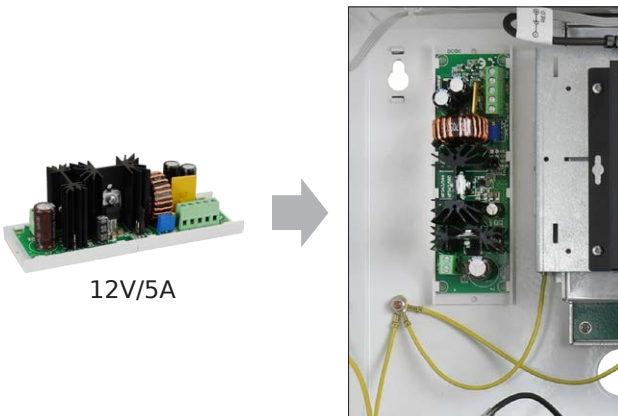
RAPDS

Universal RACK adapter for desktop switches
- recommended for AWO531W / AWO532W / SWB-300RACK



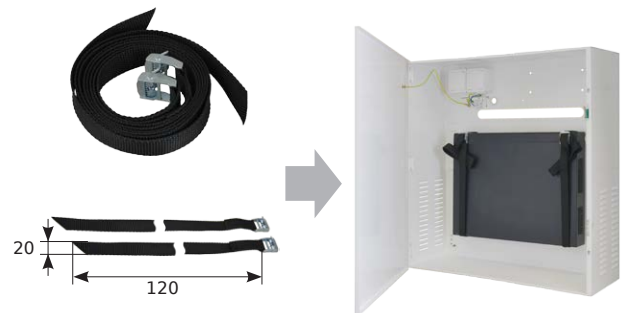
Voltage converters DC/DC

DC/DC Converter lowering voltage from 54VDC to 12VDC
- recorder power supply (NVR).



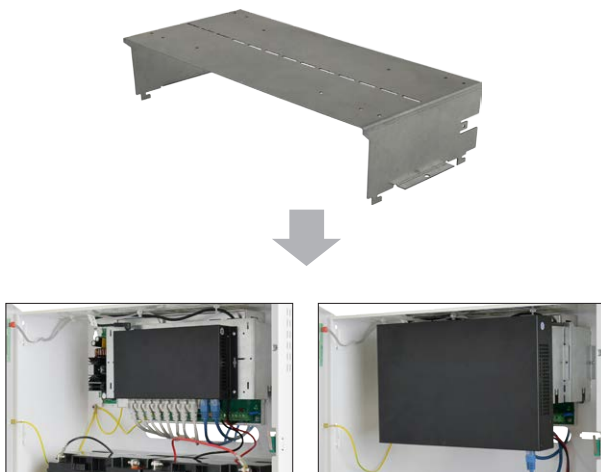
ZPR

Set of two straps for mounting recorder
- dedicated for AWO532W / SWB-300RACK



BM2

Mounting plate
- intended for SWB-120 / SWB-300



MR008 (x2)

Lock, type 802 - various code
- dedicated for AWO532W

2x  Enclosures construction is compliant with requirements of General Data Protection Regulation (GDPR), as personal data must be protected and stored securely.



CONFISWITCH

Configurator of power supply systems for PoE switches

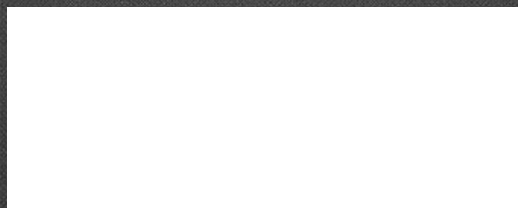


[available online on www.pulsar.pl](http://www.pulsar.pl)

CONFISWITCH program has been created to configure appropriate PoE switch power supply system.
This program enables configuration of appropriate switch with dedicated power supply system for CCTV-IP system.

Available options:

- choice of stabilized or buffer power supply
- adding recorder (or other device) power supply circuit
- space for recorder / switch RACK / patch panel
- selection of power system components from current PULSAR offer based on withdrawn products
- ability to create your own system and compare parameters with others



Contact us



Pulsar sp. j.
Siedlec 150
32-744 Lapczyca, Poland



sales@pulsar.pl



+48 14 610 19 45



www.pulsar.pl