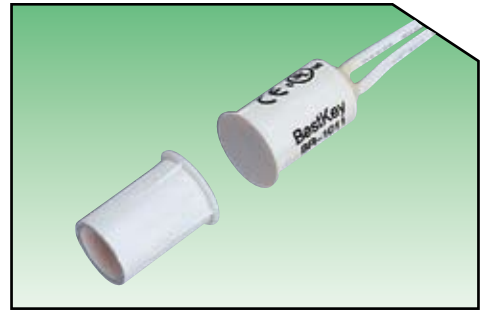


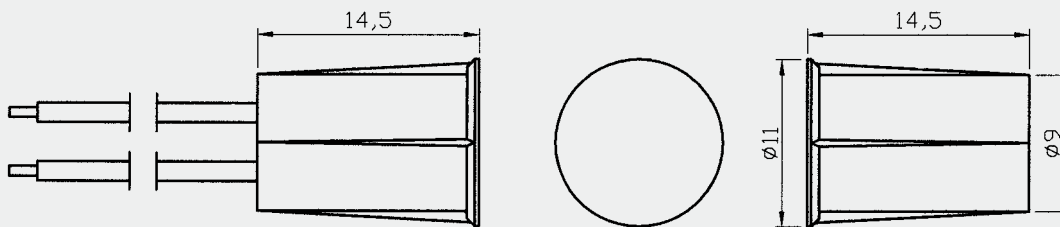
Specification: BR-1011

- * 3/8" diameter Super Miniature Stubby switch
- * Press to fit
- * Standard 18" #22AWG Leads
- * Switch or magnet are available separately
- * Special leads available on request
- * Resistor, Diode and Supervisory Loop available on request
- * Colors: White, Brown, Grey

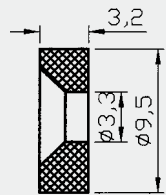
... Recessed Mounted



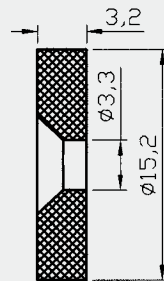
Dimension (mm):



Alternate Rare Earth Magnets:



MN400
for BR-1011DM



MN600
for BR-1011DMWG

Order Information:

Part Number	Loop Type	Reed Form	Closed Gap [Inch(mm)]	Departure Gap [Inch(mm)]	Maximum Initial Contact Resistance (Ohm)	Maximum Contact Rating (W)	Maximum Switching Voltage (VDC/VAC)	Maximum Switching Current (A)
BR-1011	Closed	N/O	3/4 (19)	0.8 (20)	0.200	10	100	0.5
BR-1011DM	Closed	N/O	5/8 (16)	0.72 (18)	0.200	10	100	0.5
BR-1011DMWG	Closed	N/O	1 (25)	1.06 (27)	0.200	10	100	0.5