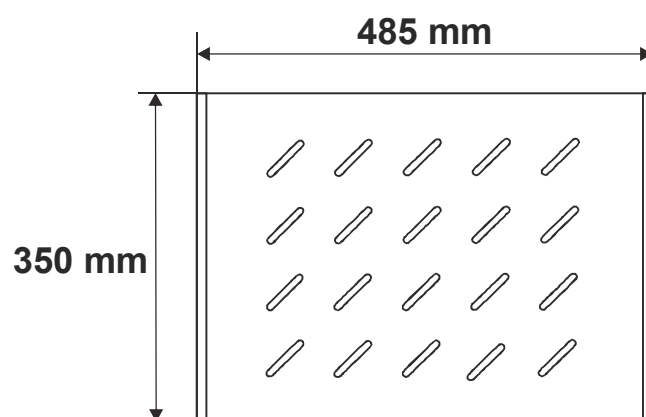
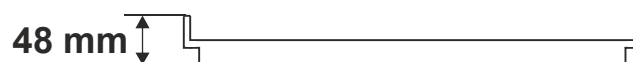
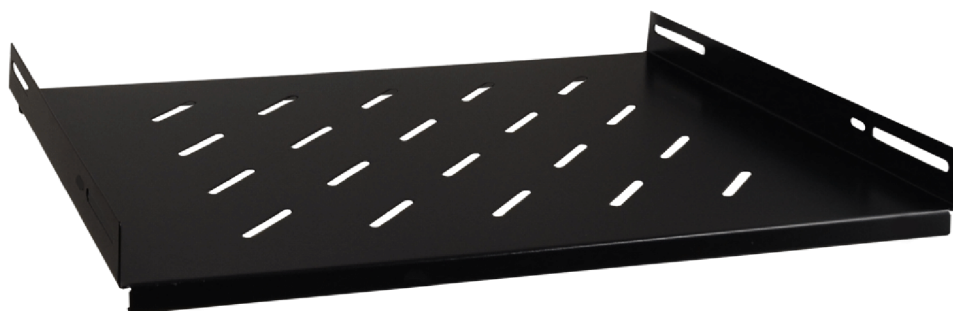


CODE: **RAPS600S** v1.1/II  
NAME: **Fixed shelf 485x350 for RACK cabinet, type RS/ZRS**

**EN**

### INTENDED USE

The fixed shelf is intended for a 600mm deep RACK cabinet, type: RS/ZRS. Due to the shelf, the RACK cabinet can accommodate devices that are not housed in a RACK 19" enclosure.

### SPECIFICATIONS

Dimensions of the shelf:	W=485, H=48, D=350 [mm, +/-2]
Net/gross weight:	1,8 / 1,9 [kg]
Materials:	1,2 mm steel sheet, RAL 9004
Static load:	60 kg
Use:	inside
Notes:	- four-point fixing to the side RACK rails - mounting set includes: 4 M6 screws, cage nuts, plastic washers