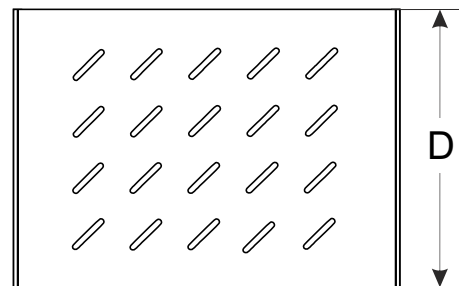
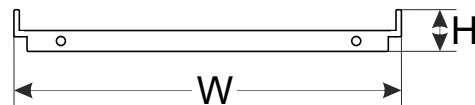
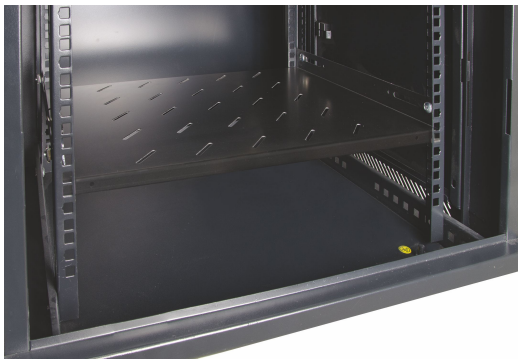
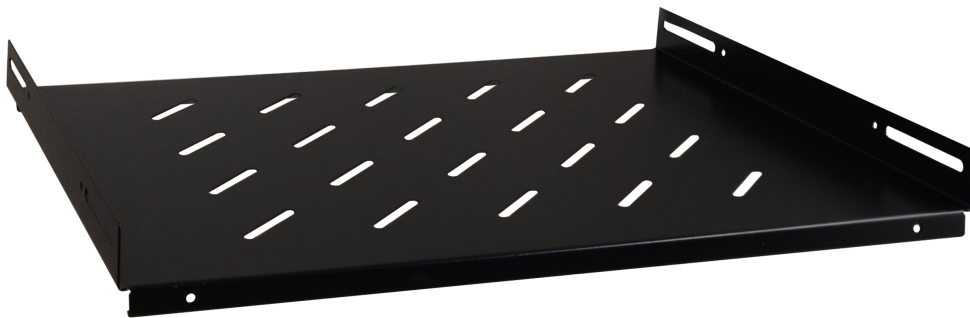


CODE: **RAPS600D** v1.1/II  
 NAME: **Fixed shelf 485x325 for RACK cabinet, type RWD**

EN



## INTENDED USE

The fixed shelf is intended for a 600mm deep RACK cabinet, type: RWD. Due to the shelf, the RACK cabinet can accommodate devices that are not housed in a RACK 19" enclosure

## SPECIFICATIONS

<b>External dimensions:</b>	W=485, H=48, D=325 [mm, +/-2]
<b>Dimensions of the shelf:</b>	W=485, D=325 [mm, +/-2]
<b>Net/gross weight:</b>	1,91 / 2,00 [kg]
<b>Materials:</b>	1,2 mm steel sheet, RAL 9004
<b>Static load:</b>	60 kg
<b>Use:</b>	inside
<b>Notes:</b>	- four-point fixing to the side RACK rails - mounting set includes: 4 M6 screws, cage nuts, plastic washers